

Project ECHO Online Symposium

– **Upskilling primary care providers**

Wednesday 10 November 2021
1:00pm – 2:30pm (AEDT)

Facilitated by Dr Simone De Morgan and Professor Fiona Blyth

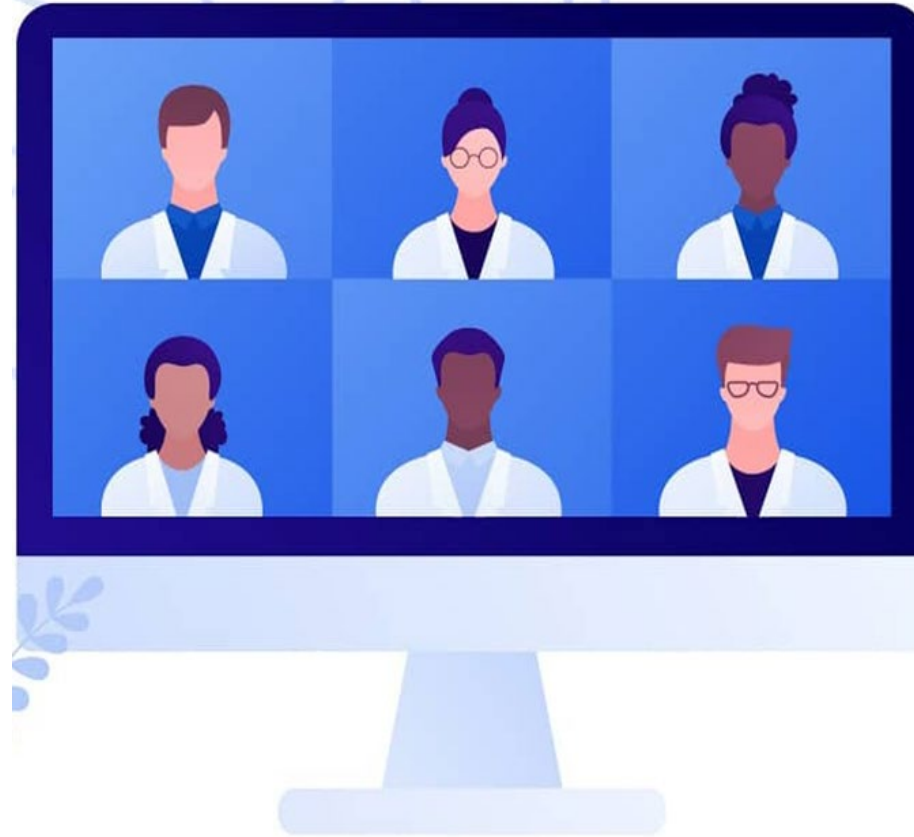


Outline of the Project ECHO Online Symposium

1. **Welcome to Country**
2. **Overview of Project ECHO**
3. **Showcase of Project ECHO programs in Australia**
4. **QLD SuperHub**
5. **Pain Management Education Consortium Project – opportunity for support for a Project ECHO program**
6. **Questions for the panel of presenters from the Chat**



Please comment and ask questions
in the Chat



The symposium will be recorded

Project ECHO

Dr Anne Daly
APA titled Musculoskeletal
and Pain Physiotherapist



My declarations

WorkSafe Victoria



Transport Accident Commission



Travel costs to Albuquerque were subsidised by the TAC



My time was paid for by WorkSafe and the TAC

What is Project ECHO

Extension of Community Healthcare Outcomes

Model of clinician education

Utilises Zoom

Aims to promote management of people in their community rather than in specialist clinics

Aims to transfer knowledge between 'Subject Matter Experts' (hub) and primary healthcare clinicians (spokes)

Acknowledges that spokes are primary care 'Subject Matter Experts'



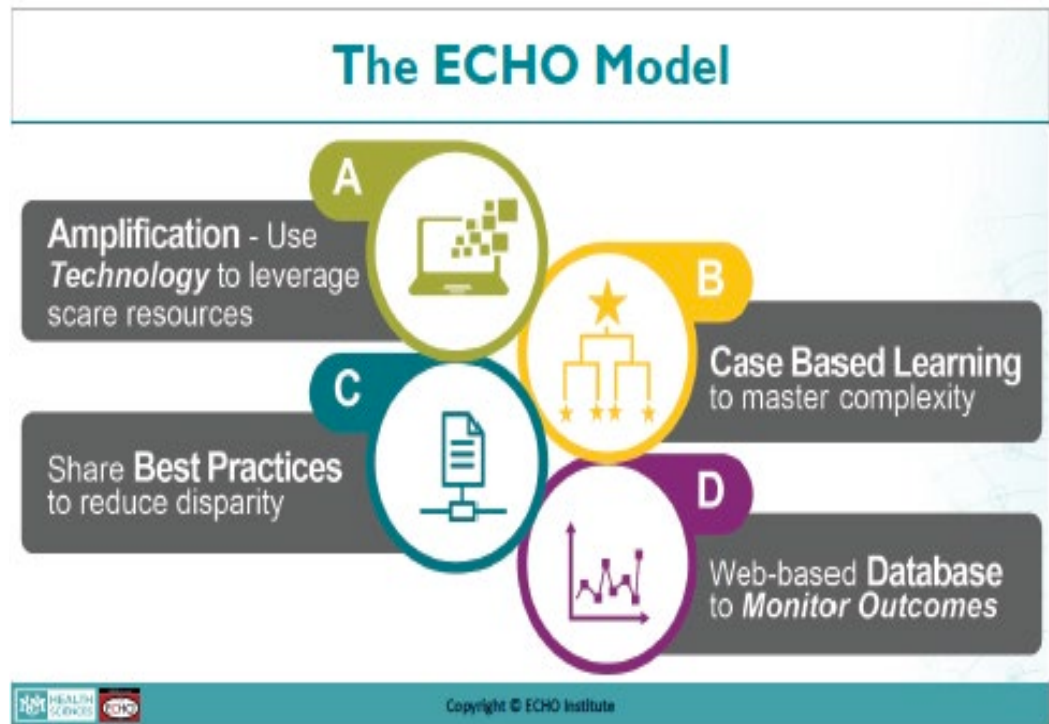
Project ECHO

- **2003**
- **Dr Sanjeev Arora,
Gastroenterologist**
- **University of New Mexico,
Albuquerque**
- **Hep C**
- **Telementoring or guided practice**
- **Community of practice**

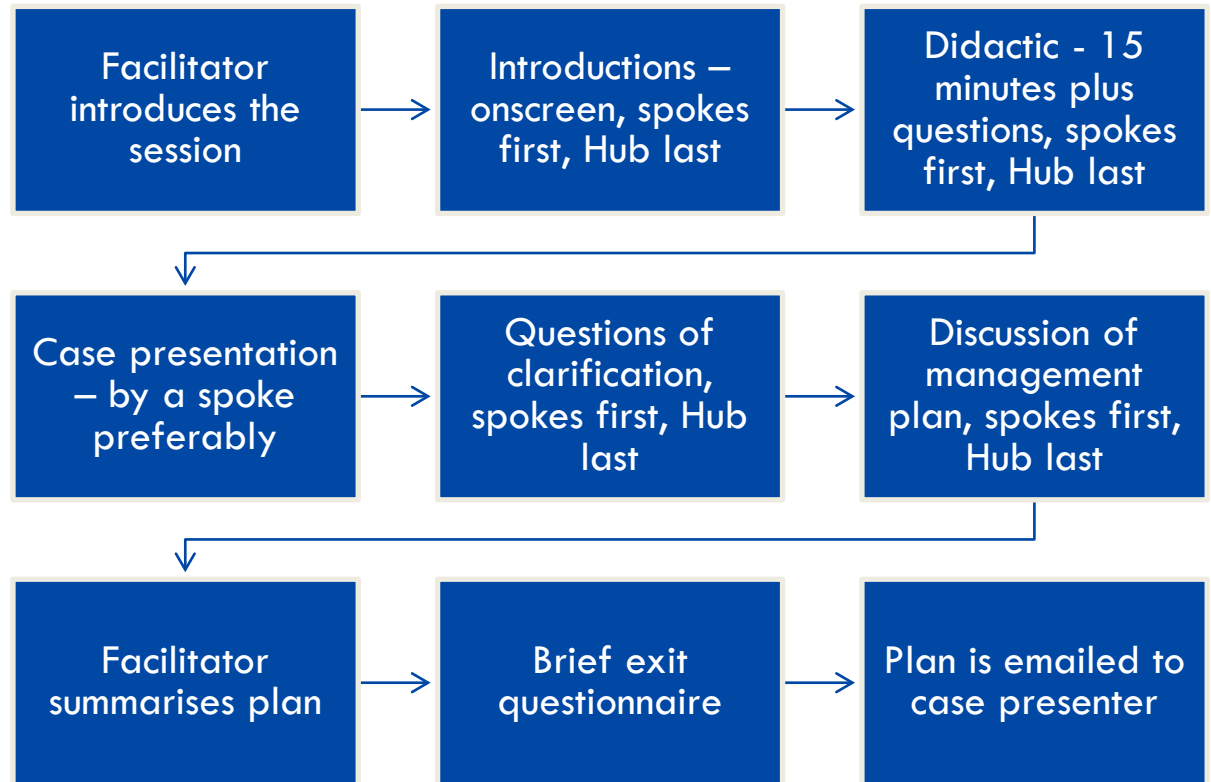


Principles of the ECHO model

**All Teach,
All Learn**

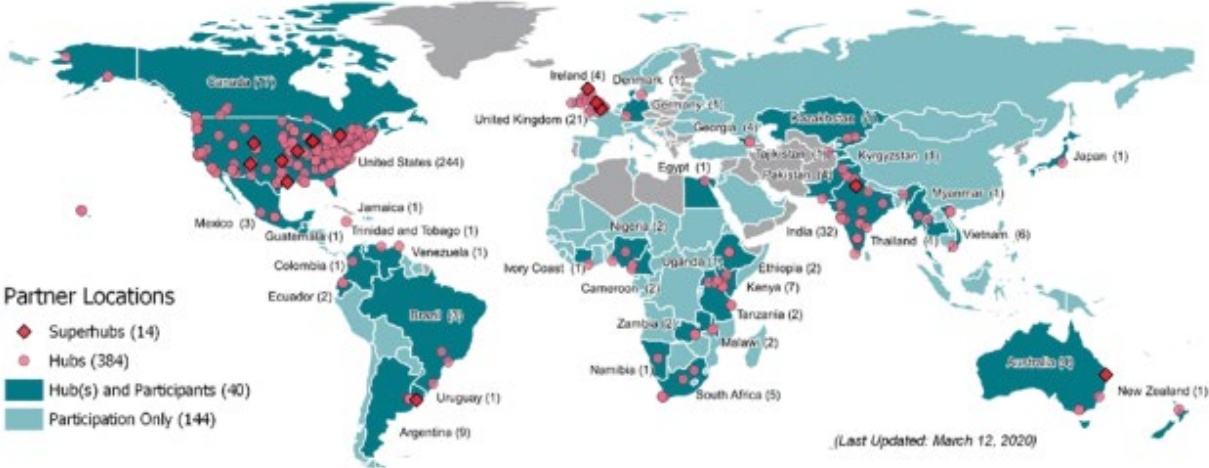


Anatomy of an ECHO



Project ECHO

ECHO Hubs and Superhubs





ECHO Movement Overview

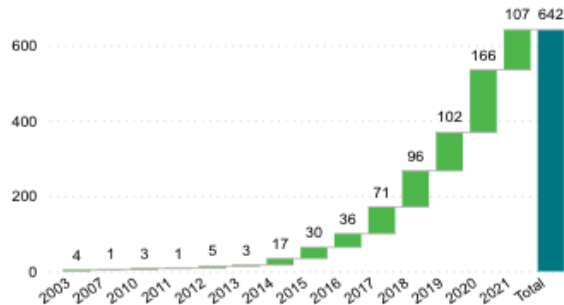
Reach Metrics

Unique Learners ⓘ	Organizations	Cities ⓘ	Countries ⓘ	Hubs
635,230	50,084	9,600	181	641
Total Attendances	Learning Hours	Sessions	Programs/Cohorts	Hub Countries
2,680,636	3,699,120	64,442	4,059	51

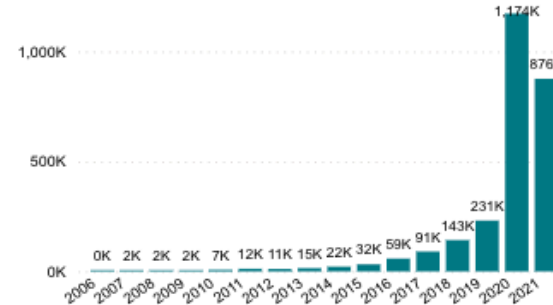
Session Metrics

Average Learners	Average Duration
45	79 minutes

Hubs Launched per Year



Attendances per Year



Project ECHO Hubs in Australia

Children's Health Qld	Goulburn Valley Health, Vic	Health and Well Being Qld
Health Consumers Qld	Liverpool Hospital, NSW	RACGP
St Vincent's Hospital Vic	Tasmanian Health Service	The Royal Women's Hospital
The University of Melbourne	Thorne Harbour Health, Vic	Townsville Hospital and Health Service
VCS foundation, Vic	Western Victoria Primary Health Network	

- Behavioural / Mental health
- COVID 19
- Infectious disease
- Paediatrics
- Social welfare
- Palliative Care
- Autism
- Nutrition and Metabolic diseases
- Refugee health
- Substance use disorders
- Chronic pain
- Cancer prevention & risk reduction
- Cancer screening
- Cancer treatment
- Domestic Violence
- Maternal and foetal health
- quality improvement
- Nephrology
- LGBT health
- Primary care
- Hepatitis C

Support for Hubs

- **ECHO Institute - UNM**
- **Superhubs - Children's Health Queensland**
- **Provide immersion training and ongoing support**

- **Asia-Pacific ECHO collaborative**
 - An ECHO for Hubs to support and mentor them!

- **MetaECHO – conference at UNM**

- **PERL – Online resource library available after immersion training**



Evaluation of Project ECHO (Persistent Pain) 2020-21 Western Victoria Primary Health Network

Presented by

Dr Simone De Morgan

Senior Research Fellow

Menzies Centre for Health Policy and Economics

University of Sydney



THE UNIVERSITY OF
SYDNEY



Research team

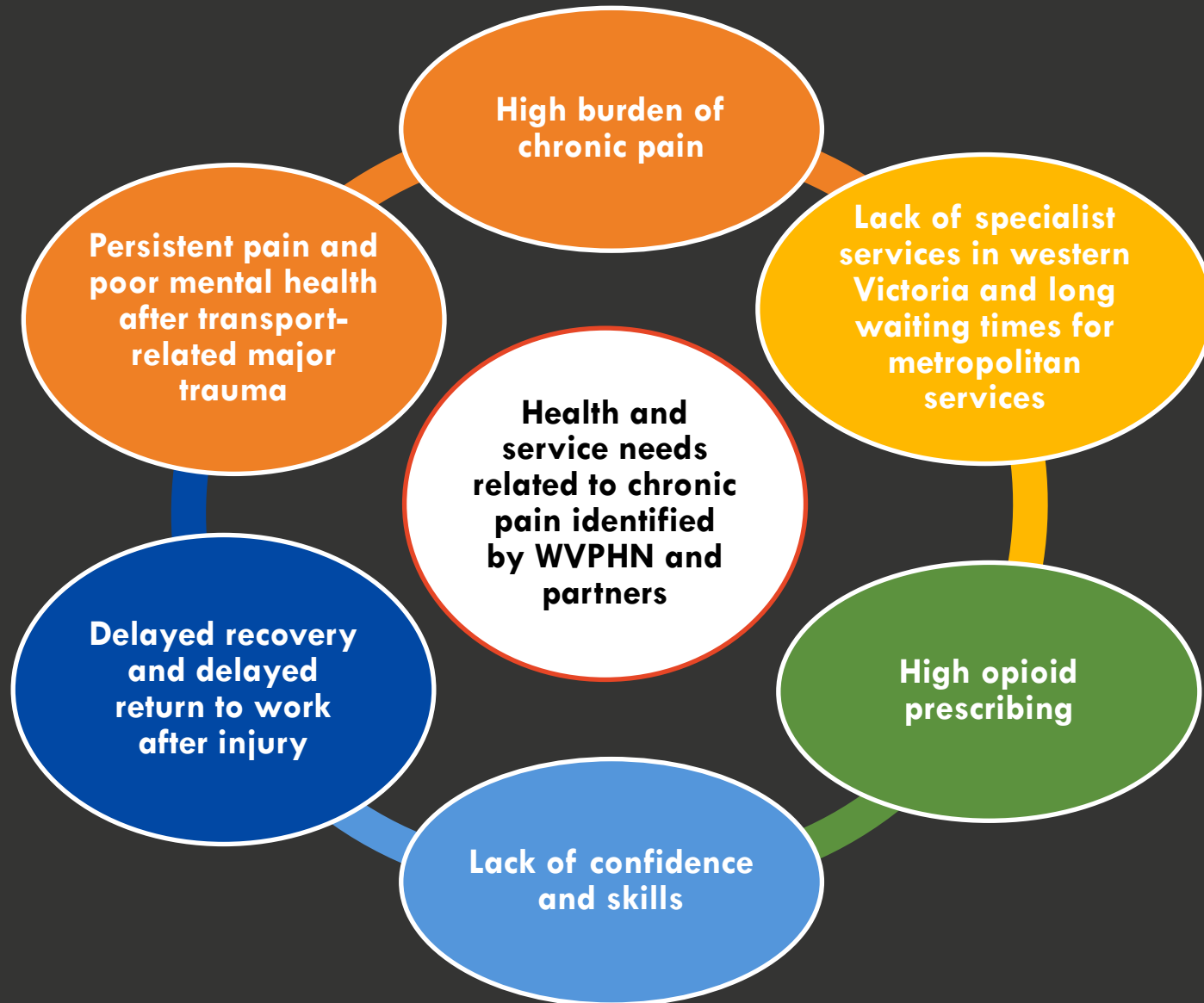
**Dr Simone De Morgan, Ms Pippy Walker, Professor Fiona Blyth,
and Dr Carmen Huckel Schneider**



THE UNIVERSITY OF
SYDNEY



This evaluation has been commissioned by the Western Victoria Primary Health Network (WVPHN) and partners



Purpose of the evaluation of Project ECHO (Persistent Pain) Series 2

To develop a program logic that could be applied to other Project ECHO programs

To understand what is working well and how they could improve the program for the next series

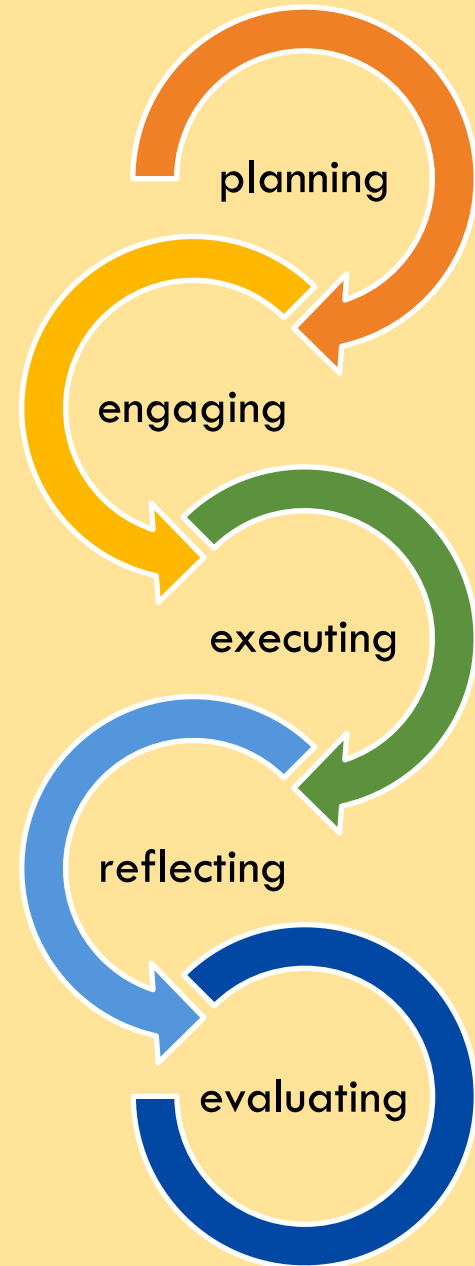
To understand the value and impact of Project ECHO for participants

To understand whether Project ECHO is a suitable and effective Workforce Learning Platform for WVPHN

To develop recommendations about how to implement high-quality Project ECHO programs that could be applied to a range of health contexts

Key findings

Project ECHO (Persistent Pain) Series 2



WVPHN values

- Aligned to WVPHN values and Strategic Directions
- Buy-in of executive staff at WVPHN
- Supported by 'Project ECHO champions' in WVPHN

Feasible to implement

- Using technology
- Established networks of stakeholders to support curriculum, panel and recruitment
- Sufficient resources (staff, IT support, in-kind support from panel)
- Capacity for ongoing quality improvement

Adaptable

- To the local WVPHN context

Acceptable

- A high level of satisfaction - content and format of Project ECHO
- Attendance met the expectations of WVPHN and partners: 87 health professionals

Effective

Improved:

- perceived knowledge
- confidence
- perceived quality of patient care
- professional support of participants

Participants valued



Project ECHO format



Up-to-date evidence-based information



Relevance



Multidisciplinary focus



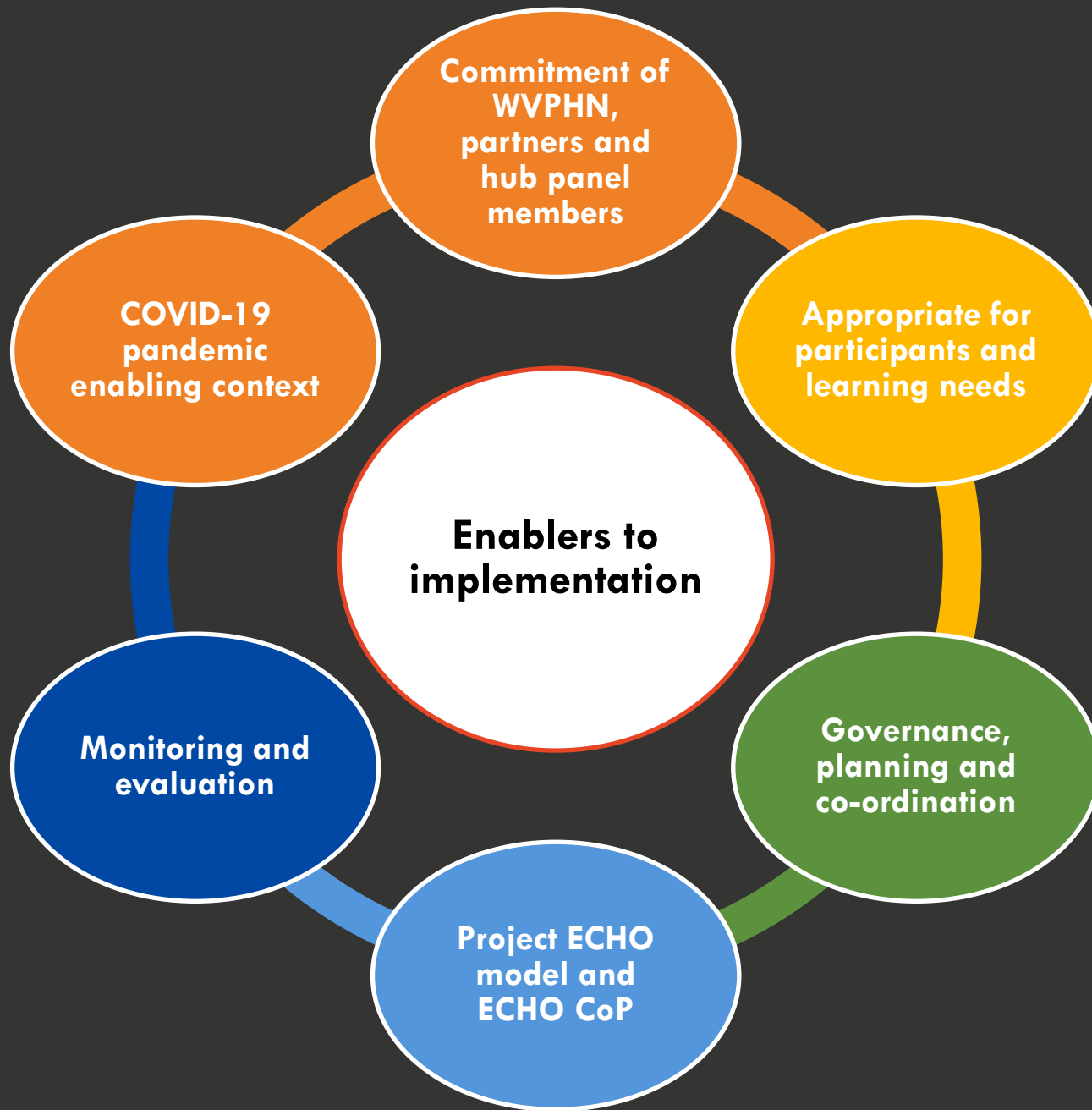
Accessibility

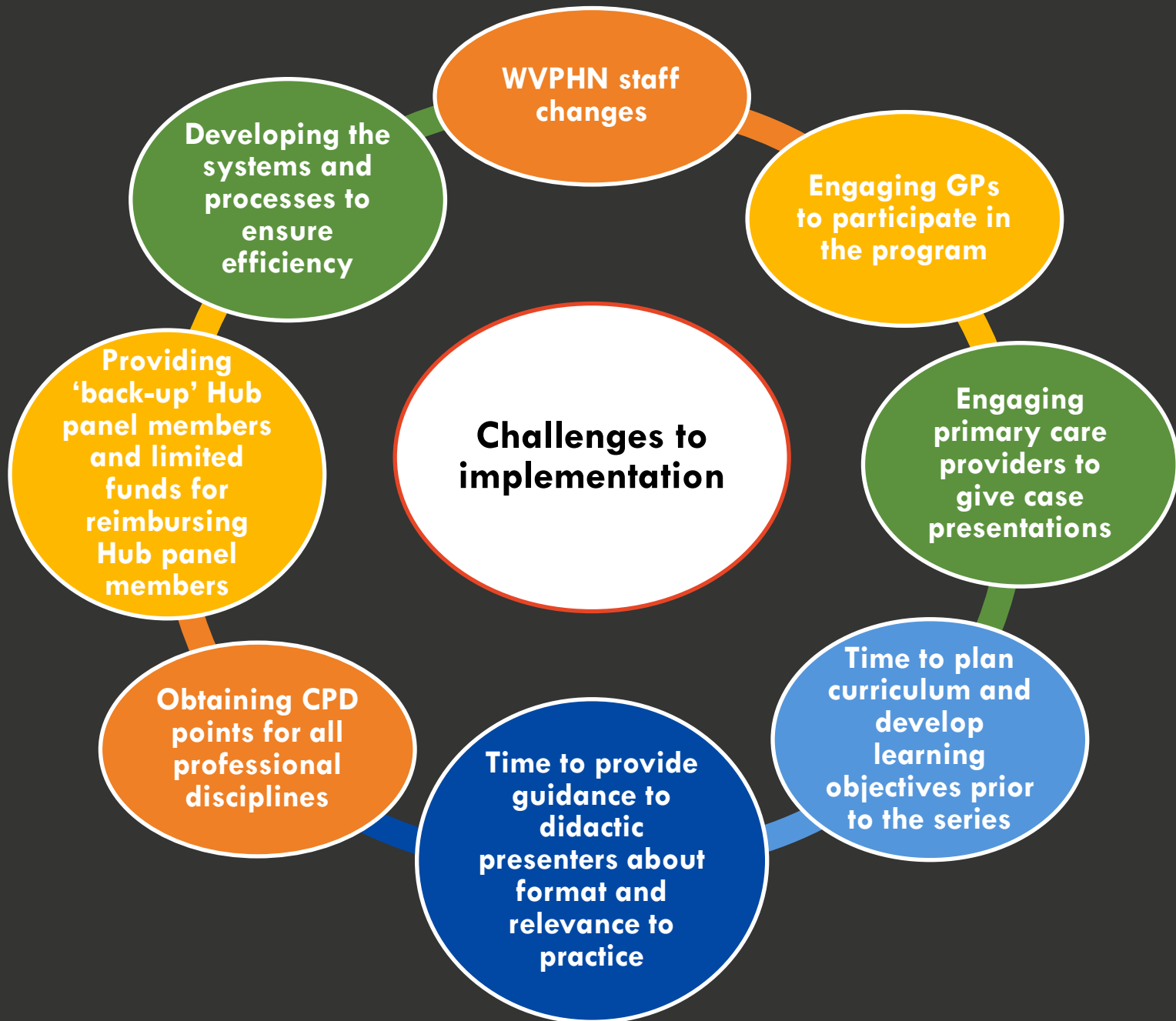


Complex cases



Resources





Recommendations

Development and implementation of high-quality Project ECHO programs



Connect with me for further information: simone.demorgan@sydney.edu.au

De Morgan S, Walker P, Blyth F, Huckel Schneider C. *Evaluation of Project ECHO (Persistent Pain): Final evaluation report.* Menzies Centre for Health Policy and Economics, Faculty of Medicine and Health, The University of Sydney, March 30, 2021.

COVID ECHO and Mental Health ECHO - Western Victoria PHN

Katrina Martin

A photograph of two women in a professional setting, overlaid with a teal tint. The woman on the left has long blonde hair and glasses, wearing a dark floral patterned top. The woman on the right has short curly hair and is wearing a light-colored top with a floral scarf. In the background, a wall features the 'phn WESTERN VICTORIA' logo.

COVID-19 and Mental Health ECHO Networks

Katrina Martin – Program Lead Workforce Development
Western Victoria PHN

Supporting general practice, commissioning health
services into gaps and driving service integration.

WVPHN Project ECHO networks

- COVID-19 ECHO
- Mental Health ECHO
 - Youth mental health network
 - Alcohol and other drug network
 - Domestic and family violence network



Project ECHO COVID-19



Item	Description
Aims of the program	<ul style="list-style-type: none">• Raise awareness of regional planning relating to COVID-19 testing, assessment and treatment services• Help primary care practitioners better understand referral pathways both now and into the future as new services emerge in response to regional planning at local, state and national levels.
Commencement date	<ul style="list-style-type: none">• 2nd April 2020
Frequency	<ul style="list-style-type: none">• Sessions run weekly, except for school holidays
ECHO hub panel	<ul style="list-style-type: none">• Infectious Diseases Physicians• GP and Clinical Editor HealthPathways and COVID Clinical Advisor Western Victoria PHN,• Director of Public Health Units
Target group	<ul style="list-style-type: none">• Open to all primary care clinicians• Western Victoria

Project ECHO COVID-19



Item	Description
CPD points	<ul style="list-style-type: none">• RACGP and ACRRM accredited (points per hour)
Implementation challenges	<ul style="list-style-type: none">• Very quick time frame to get the ECHO up and running• Rapidly evolving pandemic situation• Unsure of who would be doing our didactic presentation each week• All working from home
Implementation enablers	<ul style="list-style-type: none">• All working from home• Highly sought-after topic due to COVID pandemic• Facilitator that had just completed the ECHO immersion training and was a GP• University of New Mexico – allowed flexibility in delivery due to COVID

Project ECHO COVID-19 – Impact data



Item	Description
# sessions	<ul style="list-style-type: none">• 56 and counting
# attendees	<ul style="list-style-type: none">• 320 participants registered for the ECHO• Ave attendance = 55• 116 GPs (36.3%), Mat & Child Health Nurse (5.9%), (Practice Nurse 5.3%), Practice Managers (4.1%)
Impact and outcomes	<ul style="list-style-type: none">• Series evaluations show self-reported ^ knowledge and confidence• Improved health system-response to COVID outbreak• Currently higher than average 1st dose and 2nd dose vaccination than the rest of Victoria

Comments



So very thankful for ECHO... I don't know how I would have got through the last 18 months without you!!!... trailblazing!

Thankyou so much for stimulating forum. It is also wonderful to connect with our colleagues across the broader community. Excellent. Don't stop!!

Mental Health ECHO Networks

April 21 – Oct 21




AOD
ECHO
Network

YMH
ECHO
Network

Oct 21 – April 22

Family
Violence
ECHO
Network

Project ECHO Mental Health

	Youth Mental Health	Alcohol and Other Drugs	Domestic & Family Violence
Aims of the program	<ul style="list-style-type: none"> Recognise common mental health and developmental problems relevant to adolescents Undertake a comprehensive mental health history and assessment Relate a young person's emotional and behavioural presentation to their family, social, historical, cultural and ethnic background Through case presentations, determine management options including team care, referral, monitoring and support 	<ul style="list-style-type: none"> Differentiate models of care and support afforded by the varied disciplines working in AOD and ways in which to work collaboratively Identify appropriate evidence-based screening and assessment tools Recognise risk factors, at risk populations and presentations that could indicate need for screening for AOD issues 	<ul style="list-style-type: none"> Develop an integrated approach across primary care, community services and specialist family violence services to support early intervention for clients requiring support Build skills and expertise of the primary care workforce to appropriately and effectively identify, monitor and provide support to clients who are at risk of or experiencing family violence Build awareness of primary care workforce regarding services and resources available for supporting clients at risk of or who are experiencing family violence and linking clients with this support
CPD points	RACGP and ACRRM accredited (points per hour) Including GP mental health pd points <div style="display: flex; justify-content: space-around; align-items: center; margin-top: 10px;">    </div>		

Project ECHO Mental Health

	Youth Mental Health	Alcohol and Other Drugs	Domestic & Family Violence
Attendance	<ul style="list-style-type: none"> • 113 participants registered • 234 attendances throughout series • Ave per session = 26 	<ul style="list-style-type: none"> • 86 participants registered • 184 attendances throughout series • Ave per session = 23 	<ul style="list-style-type: none"> • 36 participants registered • 85 attendances (4 of 8 sessions complete) • Ave per session = 26
Target group	<ul style="list-style-type: none"> • GPs (18%), Psychologists (17%), Mental health & AOD clinicians and service providers, Primary care nurses & Nurse practitioners, Allied Health professionals, Aboriginal Health Workers and Practitioners 	<ul style="list-style-type: none"> • GPs (19%), Mental health & AOD clinicians and service providers, Primary care nurses & Nurse practitioners, Allied Health professionals, Aboriginal Health Workers and Practitioners 	<ul style="list-style-type: none"> • GPs (3%), GP registrars and medical students, Practice Nurses, Nurse Practitioners, Aboriginal Health Workers and Practitioners, and Allied Health professionals including psychologists (16%), social workers, mental health, AOD and domestic violence workers.

Project ECHO Mental Health

	Youth Mental Health	Alcohol and Other Drugs	Domestic & Family Violence
Partners	<ul style="list-style-type: none"> • WVPHN • Barwon Health • University of Melbourne 	<ul style="list-style-type: none"> • WVPHN • Barwon Health 	<ul style="list-style-type: none"> • WVPHN • Safer Families • Barwon Health
ECHO hub panel	<p>Didactic</p> <ul style="list-style-type: none"> • Psychologists (Barwon Health, Ballarat Health Services, Geelong Clinic) <p>Panel</p> <ul style="list-style-type: none"> • SMEs from RCH, Monash Health, Regional Headspace, other service providers 	<p>Didactic</p> <ul style="list-style-type: none"> • Psychologist, Barwon Health, SMEs Barwon Health, WRAD <p>Panel</p> <ul style="list-style-type: none"> • SMEs from local service providers 	<p>Didactic</p> <ul style="list-style-type: none"> • Safer Families researchers, educators <p>Panel</p> <ul style="list-style-type: none"> • SMEs from Barwon Health, Orange Door, Grampians Community Health, Centre for Non-Violence

Project ECHO Mental Health

	Youth Mental Health	Alcohol and Other Drugs	Domestic & Family Violence
Implementation challenges	<p>ECHO coordinators had not undergone ECHO immersion training</p> <p>Lead didactic presenter changed roles halfway through the series</p> <p>^ variation in presenters and panel</p> <p>Cases</p>	<p>ECHO coordinators had not undergone ECHO immersion training</p> <p>Can be difficult to engage GPs in AOD education</p> <p>Cases</p>	<p>7-day turnaround between YMH & AOD series' completion → DFV series start</p> <p>Cost</p> <p>Evaluating series (8 sessions over 6 months w break for summer)</p> <p>Cases</p>
Implementation enablers	<p>Experienced ECHO facilitator with excellent contacts in health services and universities</p> <p>Highly requested topic</p>	<p>Experienced ECHO facilitator with excellent contacts in health services and universities</p> <p>WVPHN AOD program helpful with service system contacts</p> <p>Consistent hub and panel members</p> <p>Very engaged CoP</p>	<p>Curriculum based on Safer Families Readiness Program</p> <ul style="list-style-type: none"> - Funding agreement = presentations and didactic speakers provided <p>ECHO team more experienced, able to work independently, procedures and templates in place</p>

More information

Contact the WestVic PHN Project ECHO team

- E: echo@westvicphn.com.au
- T: 03 5222 0800

More information on our Project ECHO Networks or to register

- <https://westvicphn.com.au/events-education/project-echo/>

Pain ECHO - North Queensland Persistent Pain Management Service

Chad Jordan and Dr Hannah Bennet



Townsville Hospital and Health Service

WELCOME

Project ECHO® - Pain Management

Dr Hannah Bennett, Staff Specialist Pain Medicine

Chad Jordan, Senior Occupational Therapist

North Queensland Persistent Pain Management Service (based in Townsville), Queensland Health

nqpm.echo@health.qld.gov.au

*I would like to acknowledge the traditional custodians of the land on which we meet.
I would also like to pay my respects to Elders past, present and emerging.*



Queensland Pain ECHO - NQPPMS

Commenced July 2020

Running monthly

Kindly supported by THHS – Surgical Service Group

Staffing and budget support from NQPPMS with support from Checkup (2020)



Develop a community of practice – providing support from specialist pain team to primary care

Increase GP knowledge and Confidence to manage patients living with pain issues

Compliment ongoing commitment to service teaching in the GP / primary care / tertiary space



Target group: Primary care providers based in Queensland including General Practitioners, Allied health professionals and Hospital based medical officers – special emphasis on rural and remote

Our ECHO Hub Panel: NQPPMS team members– Pain specialist, Senior Psychologist, Senior Physiotherapist, Senior Occupational Therapist, Facilitator (rotating AH Team Leader and Director, Pain Specialist) and ECHO Coordinator (psychologist)



ECHO

We have attempted to gain RACGP accreditation – in progress

Future plans to accredit with ACRRM

Encourage – GP presentation of case studies –MBS Case Conferencing item number: 739 (organising) 750 (participating)

Allied Health and Nursing Attendees able to claim – CPD points inline with AHPRA regulations



- clinicians across QLD registered for Persistent Pain ECHO Series
2020 - 113
2021 – 59

participants attended (total)

2020 - 28

2021 – 36

Participant disciplines:

Allied Health

Medical

GP liaison officers:

GP:

Nursing

Half of participants were QLD staff, other half were external

No participant attended all ECHO sessions,
most sessions attends was 4/5 by 3x participants (QLD Health staff)

Participants were from across various QLD locations (see map)



Topics:	Responses: (Yes / No)
Introduction to pain - Some history, development of pain science, epidemiology	74% / 26%
Assess and diagnose chronic pain	89% / 11%
Take a detailed history of the patient	69% / 31%
Communicate more effectively, especially with distressed patients	88% / 12%
Support patients to self-manage their care	97% / 3%
Back and musculoskeletal pain, The evidence for treatments, how to explain the diagnostic confusion, red flags and cauda equina, MRI's & imaging	92% / 8%
Non – pharmacological strategies to manage pain	94% / 6%
Neuropathic pain and weird pains e.g. Phantom limbs, CRPS and Trigeminal Neuralgia	89% / 11%
Pharmacological treatments – what does good look like?	92% / 8%
Pain and disability	68% / 32%
Opioids and the analgesic ladder!	83% / 17%
Explaining pain in less than 5 minutes.	82% / 18%
Indigenous people and persistent pain	71% / 29%
Addiction & mental health	88% / 12%
Rural and remote persistent pain	69% / 31%
That physio almost killed me.” Why persistent pain is different and what to do about it.	88% / 12%



Topic:	Date:	Presenter:
Impact of new PBS guidelines on opioid prescribing for persistent pain	16/07/2020	Dr Steve Gilbert (Pain Specialist)
Lower back pain	20/08/2020	Jay Whitem (Physiotherapist)
Psychosocial management of persistent pain	10/09/2020	Shereen Gilmore (Psychologist)
Non-pharmacological strategies to manage persistent pain	01/20/2020	Chad Jordan (Occupational Therapist)
Neuropathic pain	12/11/2020	Dr Aman Ahuja (Pain Specialist)
<i>Explain pain</i>	10/12/2020	Dr Hannah Bennett (Pain Registrar)



Topic:	Date:	Presenter:
Assessment of the Pain Patient	26/02/2021	Dr Hannah Bennett (Pain Registrar)
Neuropathic pain	25/03/2021	Dr Aman Ahuja (Pain Specialist)
Pain medications: the basics	23/04/2020	Dr Matthew Bryant (Pain Specialist)
Pain and Disability	27/05/2021	Chad Jordan (Occupational Therapist)
Opioids Ladder	24/06/2021	Dr Mahboubeh Adinehzadeh (Pain Specialist)
Pain Free Imaging and Painful Language	22/07/2021	Bede Ashley –(Physiotherapist)
Fast Track Pain Management – Increasing access to pain management solutions for QLD’ers	19/08/2021	Jay Whitem (Physiotherapist)
Qscript - read-only real-time prescription monitoring system	22/09/2021	Lily Taylor – (Pharmacist)
First Nations Australian Peoples and Pain: we have a lot to learn.	21/10/2021	Dr Matthew Bryant (Pain Specialist)

Successes

ECHO Process

Improved clinical knowledge of pain management

Improved clinical skills in pain management

Increased confidence in managing complex pain patients

Applying this to every day clinical practice



Challenges

Telehealth program

Session timing

Case presentation

Advertising

Participant engagement



Formal evaluation of this years ECHO with CHQ ECHO Team and QH project officer to help with planning for future ECHO series

Needs analysis: May need to be re-done to capture needs concisely, have participant needs changed?
This will inform the development of future ECHO curriculum

Consideration to co-ordinator time for ECHO;

? co-ordinator role shared between 2-3 people.

Two more staff have under gone immersion training ? More to come

? Engagement with PHN to take on some role for marketing/administration duties



Planning Day organised to plan our ECHO for 2022

Contact us

North Queensland Pain Management
Townsville Hospital and Health Service
100 Angus Smith Drive, Douglas, QLD 4814
e: nqpms.ECHO@health.qld.gov.au



Persistent Pain Service (PPS)

Project ECHO

Tasmanian Health Service

Megan Willing

PPS Pain ECHO

Royal Hobart Hospital, Persistent Pain Service

PPS Pain ECHO Program

- ◆ Hosted by the Persistent Pain Service (the only Tasmanian public pain service).
- ◆ Participants –
 - ◆ Target clinicians are Tasmanian Primary Health (multidisciplinary) although others can attend. Non THS and THS.
 - ◆ Distant clinicians - Hobart is 'regional', rest of Tas is 'rural & remote'
- ◆ Hub Team - GP, Medical Pain Specialist, Psychologist, Physiotherapist, Nurse *and Admin Officer*
- ◆ Launched August 2020
- ◆ Every 4th Tuesday (Initially was once/fortnight) - 8:30 am to 9:30 am

Why :

Providing education and support for other clinicians (particularly Primary Health), to see patients is a good use of extremely limited PPS resources and expertise.

Enablers

- ◇ Project –
 - ◇ Dedicated time and funding. (time, travel, technology requirements)
 - ◇ Clear structure and governance.
 - ◇ Plan – included
 - ◇ Stakeholder engagement
 - ◇ early recognition of the importance of admin processes.
 - ◇ Hub team training

- ◇ Support & engagement & passion
 - ◇ Project ECHO –Children’s Health Queensland & ECHO institute/UNM New Mexico
 - ◇ PPS Director (medical specialist); PPS staff (clinical and admin)
 - ◇ Networks – GP Liaison, Tas psychology groups; PHT; Pain Revolution
 - ◇ Primary Health individuals through consultation – (travel to them).

- ◇ Hub Team are PPS staff – on the same page, not ‘volunteers’, rotate staff.

Challenges

- ◆ Tasmanian Health Service signing agreement with UNM

- ◆ Persistent Pain Service limitations –
 - ◆ Limited admin availability for maintaining PPS Pain ECHO – 2 hours per session
 - ◆ Low FTEs
 - ◆ Staffing changes
 - ◆ PPS priorities

- ◆ GP engagement –
 - ◆ Limited time – to attend and also competition for CPD time
 - ◆ Funding for attendance
 - ◆ When to schedule ECHO
 - ◆ ‘don’t need education, just need services’

Outcomes

107 registrants; approx. 50% have attended. Multidisciplinary and across Tasmania. Now approx. 15 per session.

Why they register (ie advertising points):

To improve their confidence and knowledge and skills. Engage in a networking activity. Half of respondents registered to engage with the Persistent Pain Service.
NOT – CPD points.

Appealing-ness of the ECHO format:

	Attendees (n=16)	Non-attendees (n=3)
Case based discussion	93.8%	100%
Capacity to be directly involved in the discussion making	93.8%	33.3%
Directly related to their practice	93.8%	33.3%
Capacity to network	87.5%	33.3%
Tasmanian based program	75.0%	66.6%
Small group size	56.3%	66.6%

Barriers: Time and day; competition for time; cost

Pain management outcomes:

- ◆ Beneficial for clinical practice; greater confidence
- ◆ More likely to engage in collaborative team care/ seek input from other professions
- ◆ Change in how they take Persistent Pain History
- ◆ Greater medication knowledge and more likely to use non-pharmacological strategies

Contact: Megan Willing megan.Lawrence@ths.tas.gov.au


**Project ECHO Superhub -
Children's Health Queensland
and Health Service and the
Asia-Pacific ECHO
Collaborative**

Perrin Moss

Children's Health Queensland pays respect to the traditional custodians
of the lands on which we walk, work, talk and live.
We also acknowledge and pay our respect to Aboriginal and
Torres Strait Islander Elders past, present and future.

Artwork: concept watercolours of *The Glad Tomorrow 2014-2018* a sculptural installation.
Artist: Tony Albert, Girramay, East Cape region, Kuku Yalanji, East Cape region



 Children's Health Queensland
Hospital and Health Service - Australia

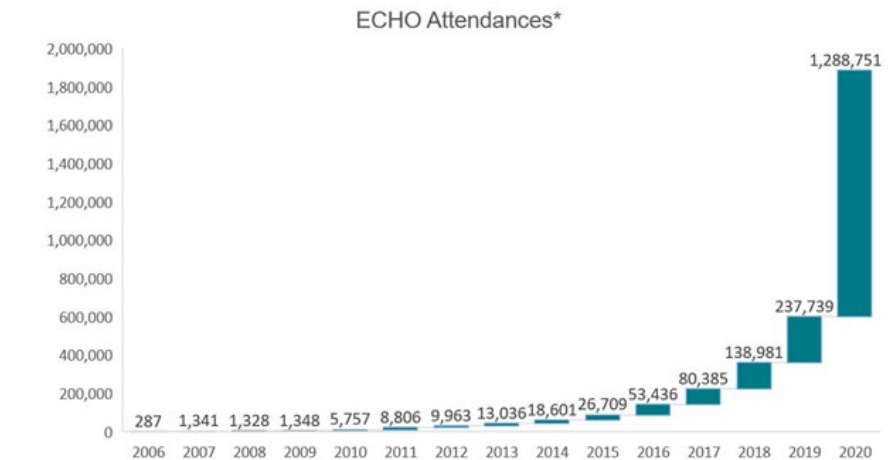
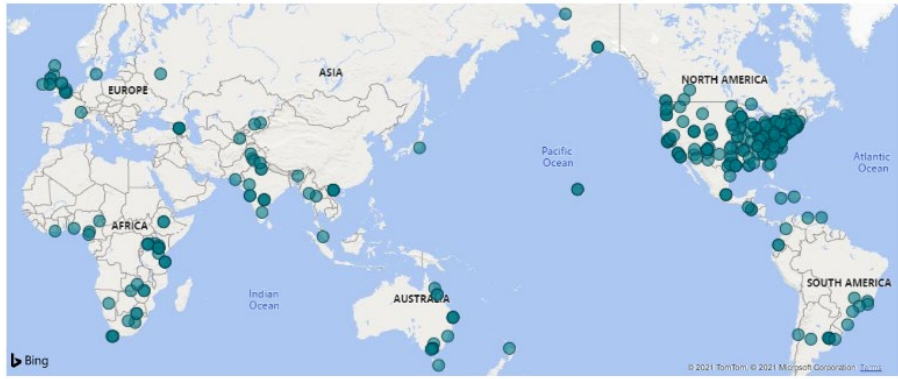
ECHO Superhub and Asia-Pacific ECHO Collaborative

Perrin Moss, Program Manager – Integrated Care
**Phil Nixon and Sarah Baggio, ECHO Network
Coordinators**



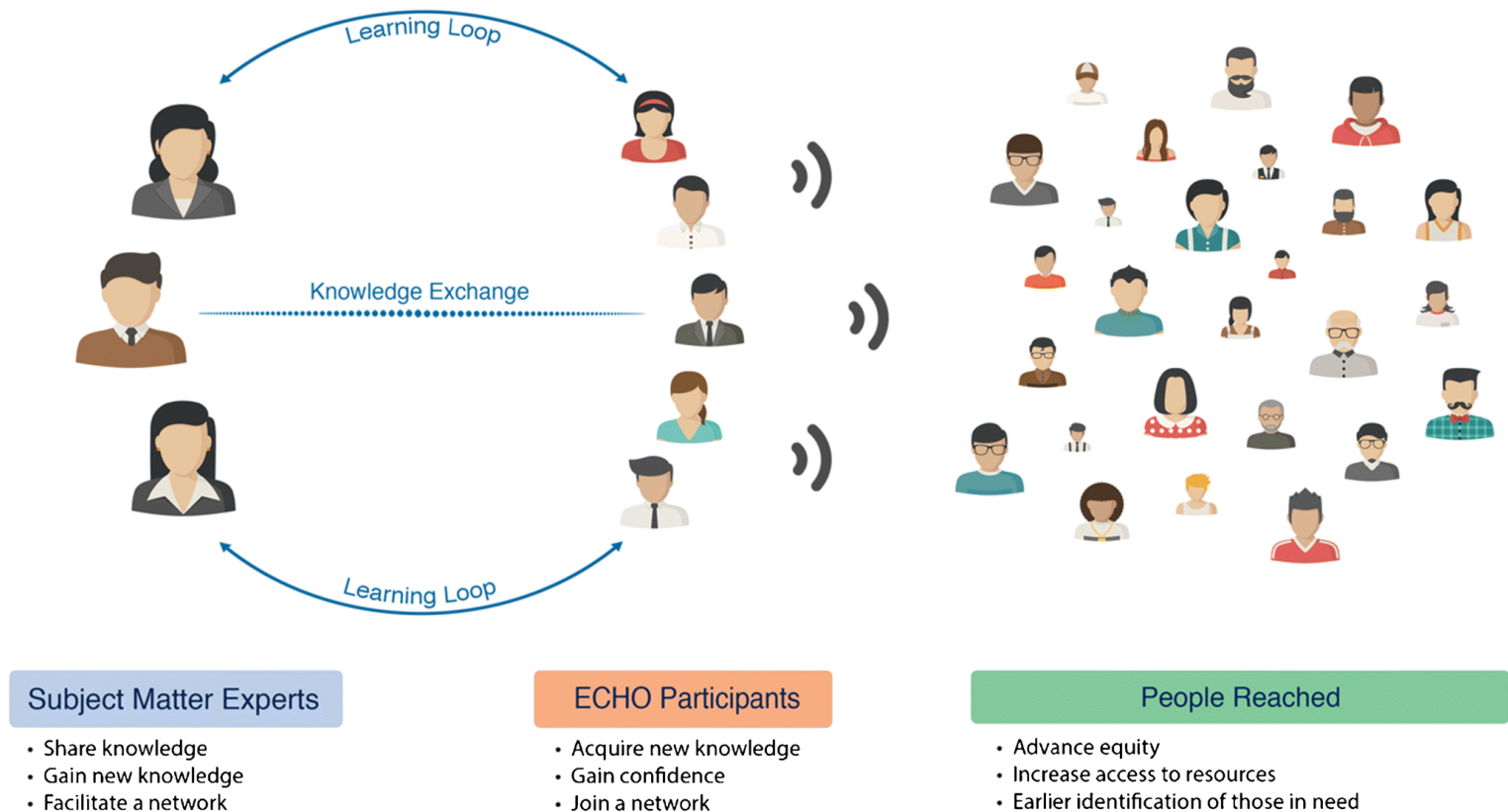
ECHO's global uptake

- The ECHO model™ is now being used worldwide to expand access to best practices for those who lack easy access to advice, mentorship and support.
- 600+ hubs globally, 17+ in Australia.

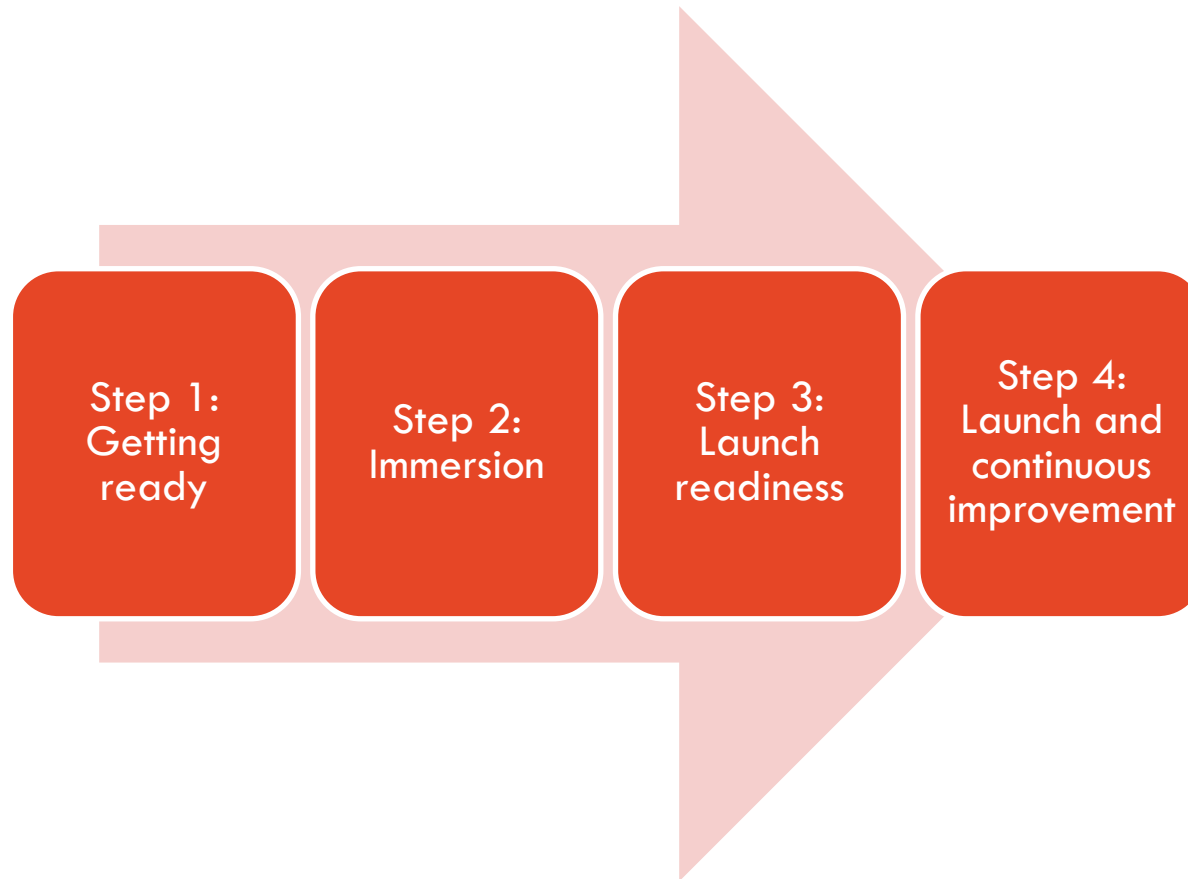


*Total annual teleECHO attendances.

ECHO Community of Practice



What is involved to become an ECHO[®] hub?



Australia's first Superhub



CHQ became an ECHO Superhub in 2019 with the goal to increase the number of organisations replicating the ECHO model across the Asia-Pacific.

What is a Superhub?

- An organisation authorised to deliver Immersion training and mentor hubs within the ECHO model™ and their own local context, while maintaining fidelity to the model and the mission; and
- CHQ is Australia’s first ECHO Superhub – providing expert training to teams implementing the ECHO model™ within the Australian context.

ECHO Superhubs (Training Centers)

	Name	City/State	Country
1	University of New Mexico (UNM ECHO Institute)	Albuquerque, New Mexico	United States
2	American Academy of Pediatrics (AAP)	Chicago, Illinois	United States
3	Children’s Health Queensland Hospital and Health Service	Brisbane	Australia
4	ECHO India	New Delhi	India
5	ECHO Ontario	Toronto, Ontario	Canada
6	ECHO Uruguay	Montevideo	Uruguay
7	Highland Hospice	Inverness, Scotland	United Kingdom
8	Hospice UK	London, England	United Kingdom
9	Missouri Telehealth Network	Columbia, Missouri	United States
10	Oklahoma State University Center for Health Sciences	Tulsa, Oklahoma	United States
11	St. Luke’s Hospice	Sheffield, England	United Kingdom
12	University of Chicago	Chicago, Illinois	United States
13	University of Texas MD Anderson	Houston, Texas	United States
14	University of Wyoming	Laramie, Wyoming	United States

Immersion training

- **Mandatory licensing training for new teams seeking to replicate the ECHO model™ within their organisations;**
- **Once-off, virtual training delivered by the CHQ Superhub;**
- **Our Immersion training is delivered virtually via Zoom, over 3x 4-hour sessions, held quarterly.**

Organisations we have trained

- **Apunipima Cape York Health Council**
- **Australasian Palliative Link International**
- **CHQ (Physiotherapy, Speech Pathology, and CYMHS)**
- **Darling Downs West Moreton PHN**
- **Dokotela**
- **Health and Wellbeing Queensland**
- **Health Consumers Queensland**
- **Hunter New England & Central Coast PHN**
- **Northern Sydney PHN**
- **Offender Health and Wellbeing, Clinical Excellence Queensland**
- **Royal Australian College of GPs**
- **South Australian Medical Education Association**
- **Sunshine Coast HHS**
- **University of NSW**
- **The University of Melbourne**
- **Thorne Harbour Health**
- **Townsville Hospital and Health Service**
- **Western Victoria PHN**
- **Western NSW PHN**
- **West Moreton HHS**
- **Western Australia Primary Health Alliance**

With a schedule of other organisations signing up to replicate the model.

Asia-Pacific ECHO Collaborative

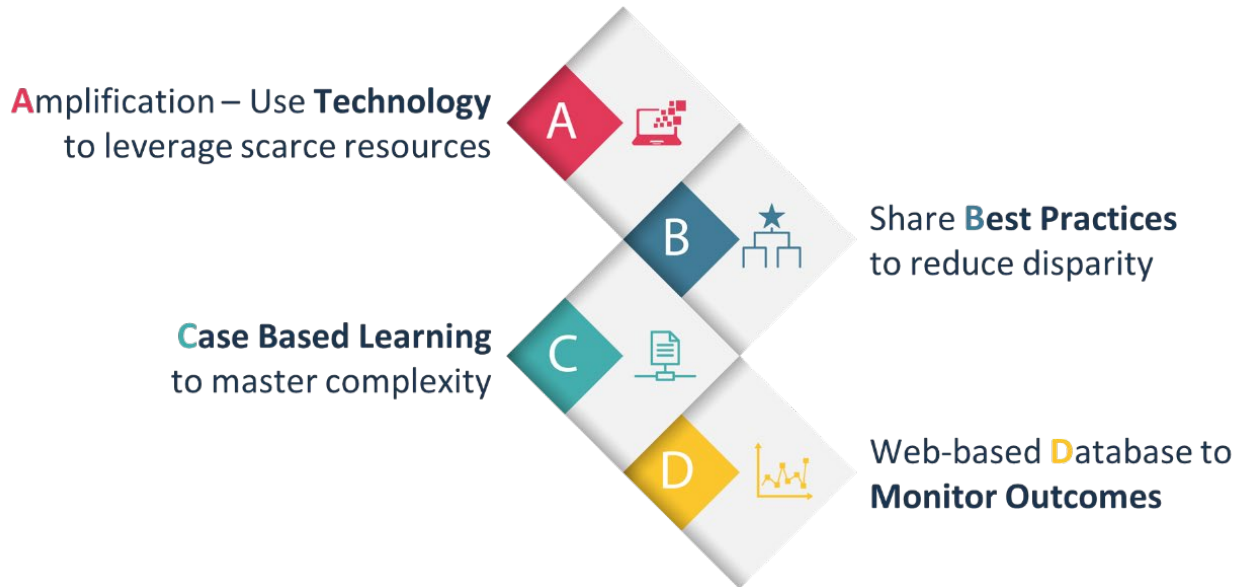


Our research interests

- **Integrated Care – using ECHO to effect more integrated approaches to care – particularly for children and young people;**
- **Intrapreneurship – the ‘type’ of people who adopt and champion the use of ECHO within and beyond their organisation;**
- **Executive decision-making to invest in piloting the ECHO model;**
- **Innovative approaches to research and evaluate the impact of ECHO within various different contexts in Australia;**
- **The personal and professional experiences of ECHO participants (panellists and spoke learners);**
- **The development of a national research strategy for ECHO in Australia; and**
- **The experiences of hub teams replicating the ECHO model in Australia.**



Get in touch today!



Contact: ECHO.CHQ@health.qld.gov.au or
<http://echo.qld.gov.au/>

[What is Project ECHO? \(video\)](#)

Pain Management Education Consortium Project (DoH 2020-24)

**Professor Michael Nicholas, Pain Management Research Institute,
University of Sydney**

Pain Management Education Consortium Project (DoH 2020-24)



The Menzies Centre for Health Policy and Economics will support one PHN and partners to implement and evaluate a Project ECHO program for chronic pain by:

- **Providing planning and implementation advice, building on the learnings of the evaluation of the WVPHN Project ECHO (Persistent Pain) program**
- **Leading the curriculum development in collaboration with the Pain Management Education Consortium**
- **Assisting with the recruitment of guest speakers**
- **Developing the evaluation framework & conducting the evaluation**



Pain Management Research Institute, University of Sydney



Menzies Centre for Health Policy and Economics, University of Sydney



Curtin University



Australian Pain Society



National Ageing Research Institute



Pain Revolution, University of South Australia



Dr Anne Daly, a Project ECHO content expert and consultant for WorkSafe Victoria and TAC

Q and A

Facilitated by Professor Fiona Blyth

THANK YOU

After the symposium, please complete the brief evaluation survey (link in the Chat and will also be sent to you)

Follow-up with Simone if you would like more information

simone.demorgan@sydney.edu.au